

**ADDENDUM #1**  
**SOUTH VILLAGE WASTEWATER – TREE REMOVAL**  
**LONDONDERRY, VERMONT**

Date: December 17, 2025

To: Bidders  
Owner

Subject: Addendum No. 1  
To Bid Documents for  
South Village Wastewater – Tree Removal

Engineer: Dufresne Group  
56 Main Street, Suite 200  
Springfield, Vermont 05156  
Telephone (802)-674-2904

---

This addendum forms parts of the Bid Documents and modifies the original drawings and specifications.

I. Clarifications:

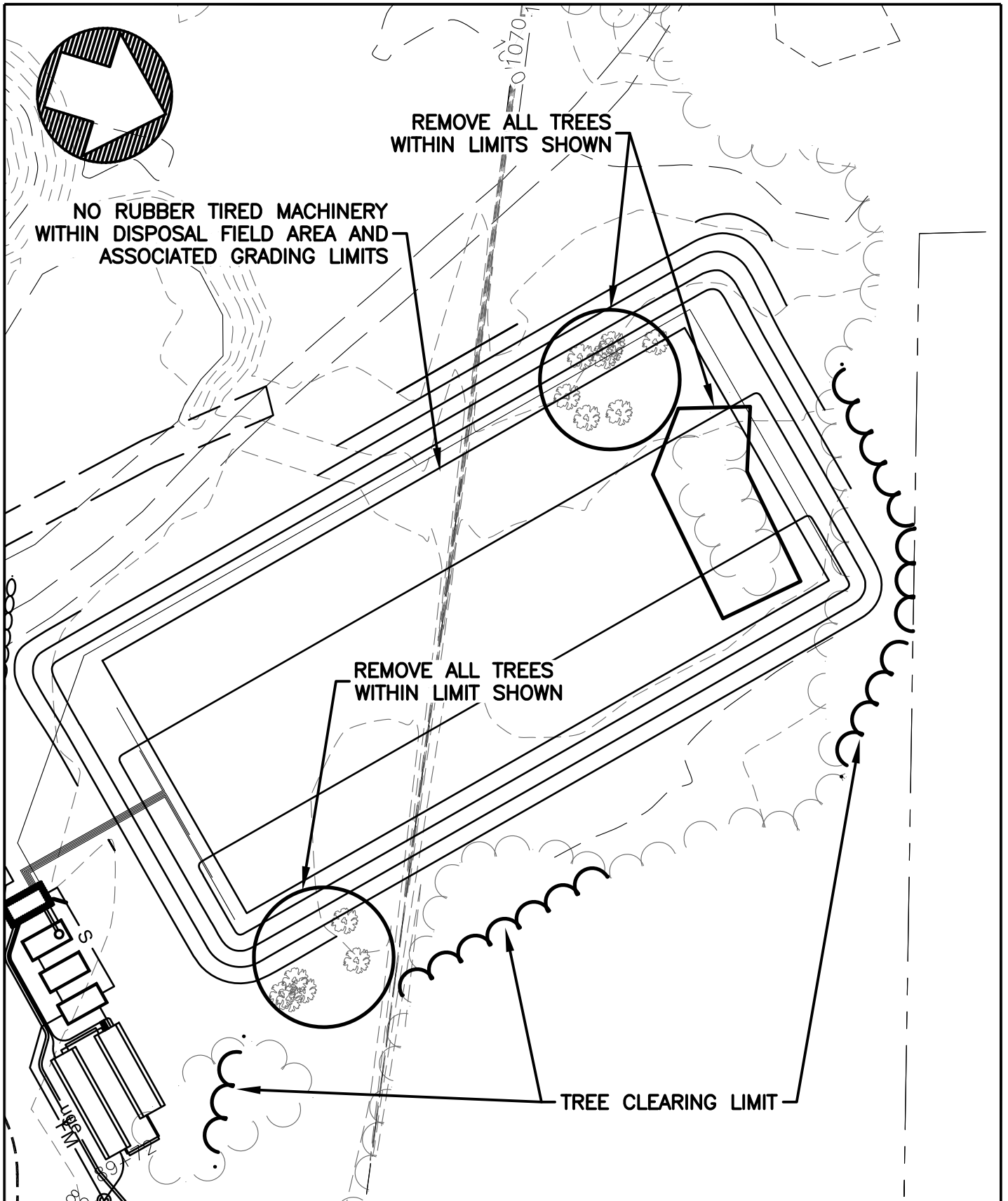
- A. The trees to be removed as part of this project will be flagged on-site. The flagging will be completed by mid-day on December 18, 2025. Individual trees at 3115 Route 100 will be individually flagged. Groups of trees for removal at the Prouty Land will be flagged with a ribbon around the groups of trees to be removed. All trees inside the ribbon shall be removed.

II. Figures:

- A. Figure 2: Replace Figure 2 in its entirety with the attached. The only change is the noted scale on the drawing has been corrected.
- B. Figure 3: Add the attached Figure 3. This provides a larger scale location map for the Prouty Land site, with reference to the Town's salt shed.

**END OF ADDENDUM #1 ITEMS**

FILE: C:\Users\chaskins\OneDrive - NHVT Computer Services, LLC\To Do\Londonderry South WW FD\CAD\C1-CX.dwg Dec 16, 2025 - 7:14pm

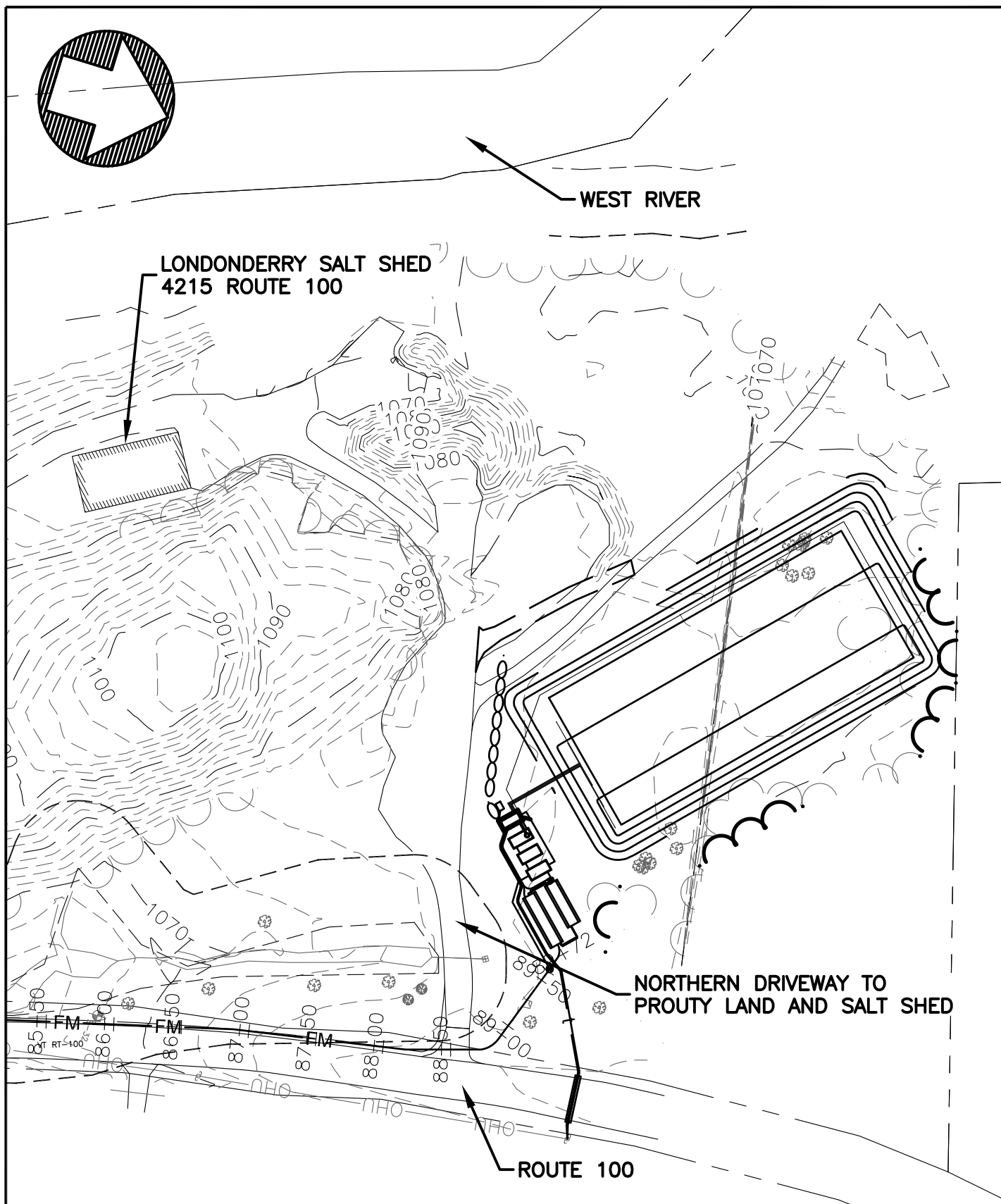


DUFRESNE GROUP  
CONSULTING ENGINEERS

Suite 200, 56 Main Street  
Springfield, Vermont 05156  
Tel: (802) 674-2904 Fax: (802) 674-2913  
E-mail: info@dufresnegroup.com  
Home page: www.dufresnegroup.com

FIGURE 2 (REVISED)  
SOUTH VILLAGE WASTEWATER  
PROUTY LAND  
TREE REMOVAL PLAN  
LONDONDERRY, VERMONT

PROJECT NO. 3124003  
PROJECT MGR. CMH  
SCALE 1"=50'  
DATE DEC. 16, 2025  
DRAWING NO. C1-CX.dwg



**DUFRESNE GROUP  
CONSULTING ENGINEERS**

Suite 200, 56 Main Street  
Springfield, Vermont 05156  
Tel: (802) 674-2904 Fax: (802) 674-2913  
E-mail: info@dufresnegroup.com  
Home page: www.dufresnegroup.com

**FIGURE 3**

**SOUTH VILLAGE WASTEWATER  
PROUTY LAND  
LOCATION MAP**

**LONDONDERRY, VERMONT**

PROJECT NO. 3124003

PROJECT MGR. CMH

SCALE 1"=100'

DATE DEC. 16, 2025

DRAWING NO. C1-CX.dwg